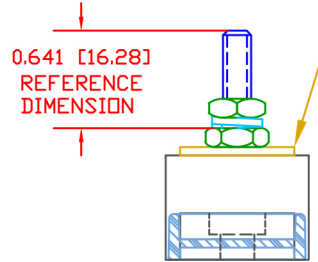
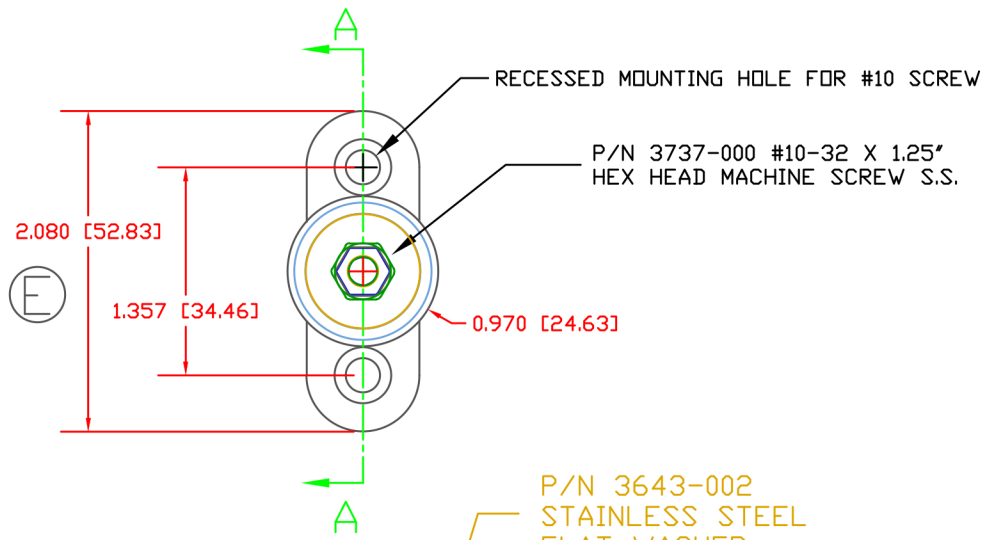
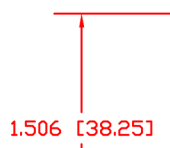


LTR.	REVISIONS	DATE	INT.
A	ADDED OPTIONAL CONSTRUCTION NOTE AND -000 SUFFICES TO COMPONENT P/N'S	4-04-06	BRH
B	ADDED OPTIONAL CONSTRUCTION NOTE FOR P/N 3643-002	4-28-14	BRH
C	REMOVED OPTIONAL CONSTRUCTION NOTE FOR P/N 3643-002	10-20-15	RAS
D	PN 329NOV** CHNAGED TO PN 329NON**	6-23-16	MDL
E	UPDATED AND ADDED DIMENSIONS FOR MOUNTING	7-31-17	RAS
F	REPLACED CURRENT LIMITS WITH TEMPERATURE LIMIT	10-12-18	RAS



P/N 3643-002 STAINLESS STEEL FLAT WASHER



P/N 3841-001 #10-32 UNF HEX JAM NUT STAINLESS STEEL. (2) REQ'D

P/N 3636-000 #10 STAINLESS STEEL LOCK WASHER

P/N 3841-001 BOTTOM NUT FACTORY INSTALLED TO 15 IN./LBS. (DO NOT REMOVE)

P/N 329N0N02 CAVITY PLUG

P/N 327N1N02 MOLDED HOUSING

SCALE FACTOR : NONE
 ALL DIMENSIONS GIVEN AS: in [mm]
 TOLERANCES UNLESS OTHERWISE SPECIFIED :
 MOLDED PARTS: ±.030" [±0.8mm]
 HARDWARE ITEMS: ±.010" [±0.25mm]

MATERIAL:
 VENDOR PART NO:
 SPECIFIC GRAVITY:
 MELTING TEMP:
 U.L. RATING:

GLASS FILLED NYLON
 NYLON N2015 HL NAT
 1.23
 515 F [268 C]
 UL 94 HB

(F) OVERALL ASSEMBLY TEMPERATURE NOT TO EXCEED 140 DEGREES F (60 DEGREES C)

MAXIMUM RECOMMENDED TORQUE: 10 IN./LBS



REF:	DATE: 12-20-03	DRN BY: BRH	WEIGHT:
TITLE: POST TYPE JUNCTION BLOCK		CHK'D BY: BRH	SCALE:
MATERIAL:		PART NO. 670150	
COLOR: RED	DRG CLASS: REV F		