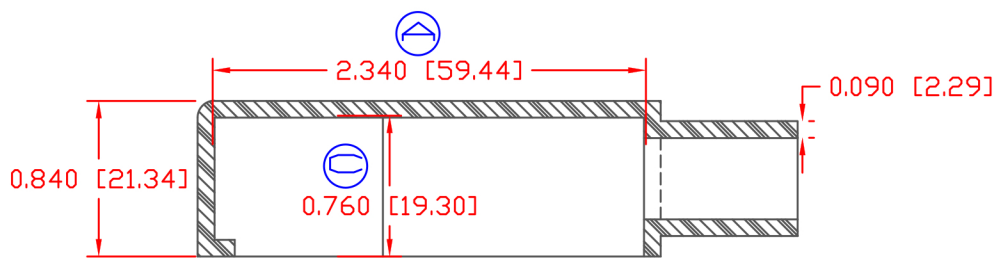
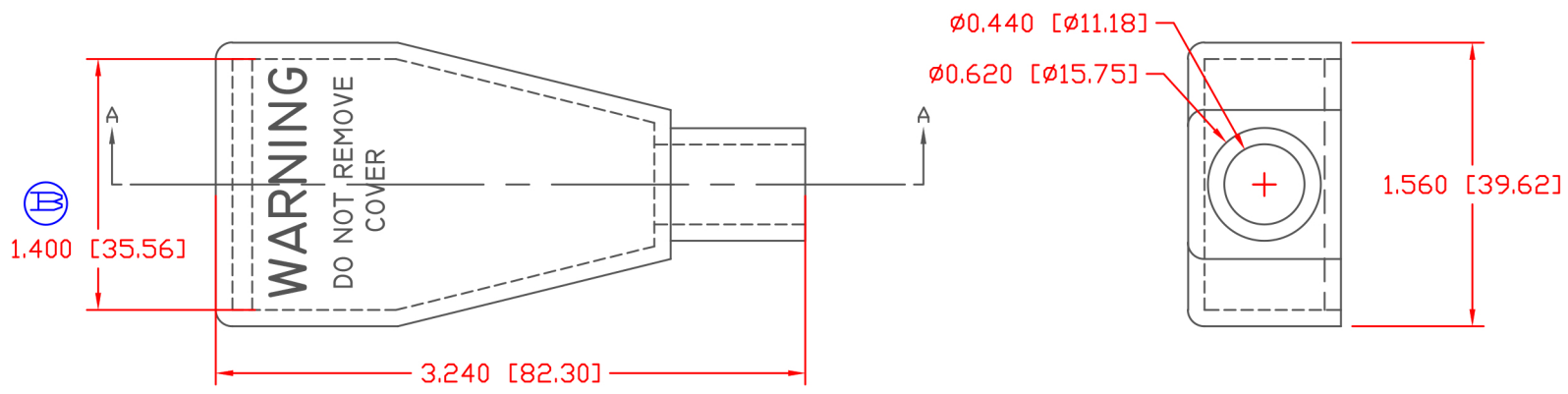


LTR.	REVISIONS	DATE	INT.
A	UPDATED 2.320 TO 2.340	3-2-17	RAS
B	UPDATED 1.380 TO 1.400	3-2-17	RAS
C	UPDATED 0.750 TO 0.760	3-2-17	RAS



SECTION A-A  
 TYP. WALL THICKNESS = .090" [2.3]  
 TYP. RADIUS = .090" [2.3]

MATERIAL: PVC  
 VENDOR PART NO: 9812-65-BLACK  
 SHORE DUROMETER: "A" 10 SEC. 65  
 SPECIFIC GRAVITY: 1.34  
 ULT. ELONGATION %: 400  
 MELTING TEMP: 315-335 F [157-168 C]  
 BRITTLE TEMP: -54 F [-48 C]  
 TENSILE STRENGTH PSI: 1550 PSI  
 DIELECTRIC STRENGTH, V./mil: 453  
 U.L. RATING: V2

ALL DIMENSIONS GIVEN AS: In [mm]  
 MOLDED PARTS: ±.030" [±0.8mm]  
 HARDWARE ITEMS: ±.010" [±0.25mm]

DO NOT SCALE



REF:	DATE: 03-27-16	DRN BY: JC	WEIGHT: .044 LBS [20.5 g]
TITLE: BATTERY CABLE BOOT		CHK'D BY: JC	
MATERIAL: PVC		PART NO. 670145	
COLOR: BLACK	DRG CLASS		