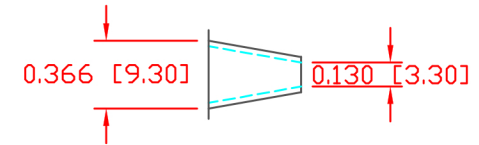
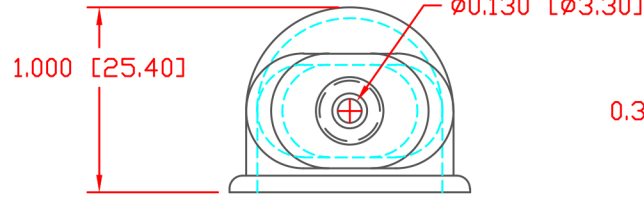
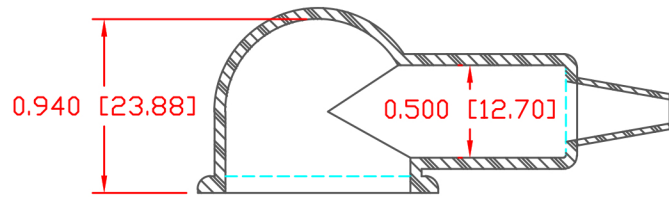
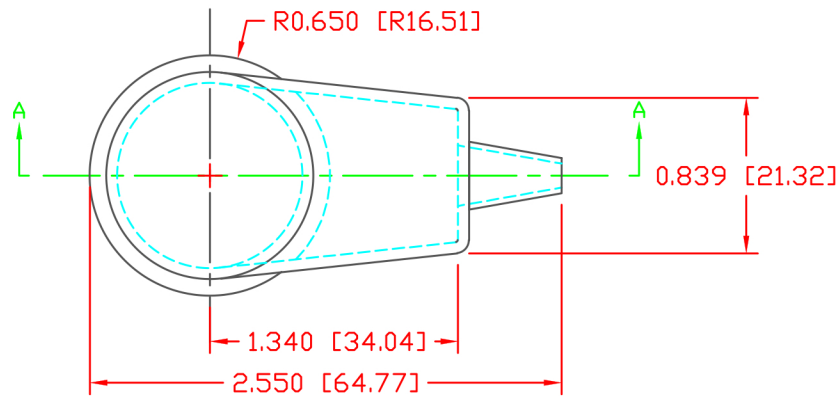


LTR.	REVISIONS	DATE	INT.



SEAL DETAILS
 SEAL THICKNESS = .030" [.8]
 SEAL TOLERANCE: +.030/-0.010 [+0.8/-0.25]
 WIRE GAGES: 18 - 10

SECTION A-A
 TYP. WALL THICKNESS = .060" [1.5]



SCALE FACTOR : NONE
 ALL DIMENSIONS GIVEN AS: in [mm]
 TOLERANCES UNLESS OTHERWISE SPECIFIED :
 MOLDED PARTS: ±.030" [±0.8mm]
 ALL ANGLES ARE ± 1 DEGREE

MATERIAL:	PVC
VENDOR PART NO:	9812-65-RED 683
SHORE DUREMETER:	"A" 10 SEC. 65
SPECIFIC GRAVITY:	1.34
ULT. ELONGATION %:	400
MELTING TEMP:	315-335 F [157-168 C]
BRITTLE TEMP:	-54 F [-48 C]
TENSILE STRENGTH PSI:	1550 PSI
DIELECTRIC STRENGTH, V./mil:	511
U.L. RATING:	V2

DO NOT SCALE



REF:	DATE:	DRN BY:	BRH	WEIGHT:
CUSTOMER DIMS	02-14-05	CHK'D BY:	BRH	.019 LBS [8.48 g]
TITLE: EYELET TERMINAL INSULATOR				
MATERIAL: PVC			PART NO.	
COLOR: RED			670130	
DRG CLASS				