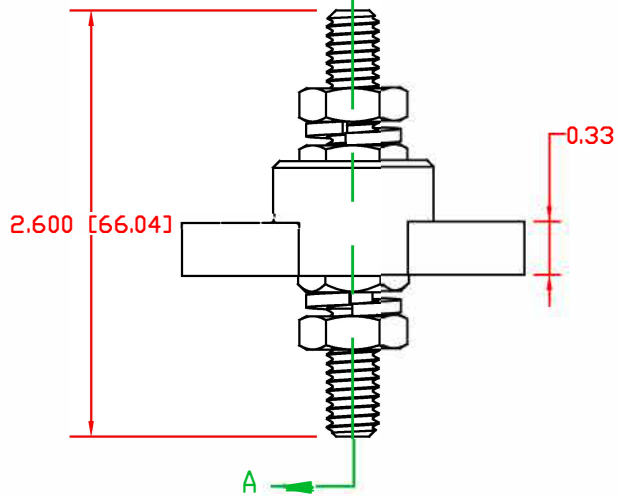
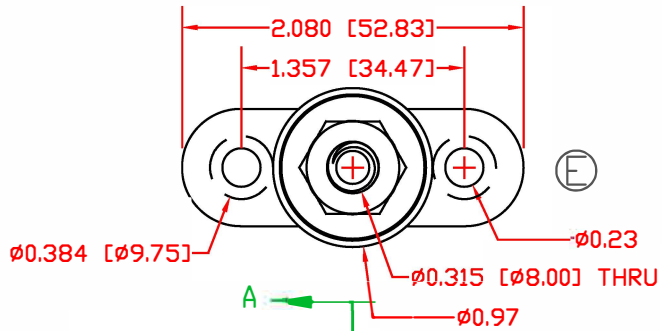


LTR.	REVISIONS	DATE	INT.
A	3844-012 WAS 3844-000	11-01-16	JMM
B	REVISED TORQUE FROM 144 IN./LBS.	05-11-17	RAS
C	ADDED LOCKTITE FOR CONTACT NUT ASSEMBLY	05-11-17	RAS
D	3844-B00 WAS 3844-000	6-02-17	JMM
E	UPDATED AND ADDED DIMENSIONS FOR MOUNTING	7-31-17	RAS
F	UPDATED ELECTRICAL VALUES	10-25-18	RAS
G	UPDATED TORQUE VALUE	7-01-20	EJE
H	UPDATED PART # FROM 3742-000	8-18-21	RAS
I	UPDATED PART # FROM 327D4	8-23-21	RAS
J	UPDATED TORQUE VALUE FROM 160 IN/LBS	8-26-21	RAS
K	UPDATED ELECTRICAL VALUES	10-18-22	RAS



3742-018 NICKEL PLATED BRASS THREADED BOTH ENDS (H)

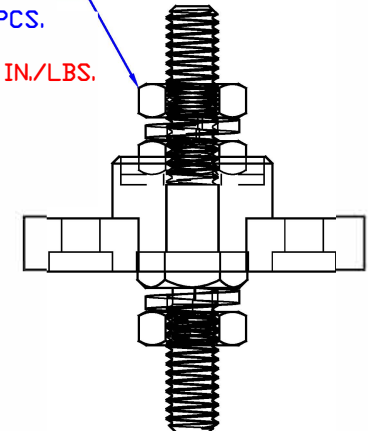
3844-B00 3/8-16 HEAVY HEX JAM NUT TIN PLATED BRASS FACTORY ASSEMBLED TO 150 IN./LBS. BLUE DOT TECHNOLOGY ( DO NOT REMOVE ) (J) (D)

3646-000 STAINLESS STEEL FLAT WASHER

327D7N02 NYLON HOUSING (I)

3638-000 STAINLESS STEEL SPRING WASHER, 2 PCS

3844-012 3/8-16 HEAVY HEX JAM NUT STAINLESS STEEL, 2 PCS. MAXIMUM RECOMMENDED FASTENER TORQUE: 136 IN./LBS. (A) (B) (G)



SECTION A-A

SCALE FACTOR: NONE  
 ALL DIMENSIONS GIVEN AS: In [mm]  
 TOLERANCES UNLESS OTHERWISE SPECIFIED:  
 MOLDED PARTS: ±.030" [±0.8mm]  
 HARDWARE ITEMS: ±.010" [±0.25mm]

MATERIAL:  
 VENDOR PART NO:  
 SPECIFIC GRAVITY:  
 MELTING TEMP: U.L.  
 RATING:

GLASS FILLED NYLON  
 NYLON N2015 HL NAT  
 1.23  
 515 F [268 C]  
 UL 94 HB

CURRENT CARRYING CAPACITY:

(375 AMP @ 12VDC)



REF: CUSTOMER DIMS	DATE: 8-26-21	DRN BY: RAS CHK'D BY: PJK	WEIGHT:
TITLE: JUNCTION BLOCK, STUD TYPE, PASS-THRU			SCALE: NONE
MATERIAL: GLASS FILLED NYLON		PART NO.	
COLOR: RED	DRG CLASS: REV K	670160 - 670161	